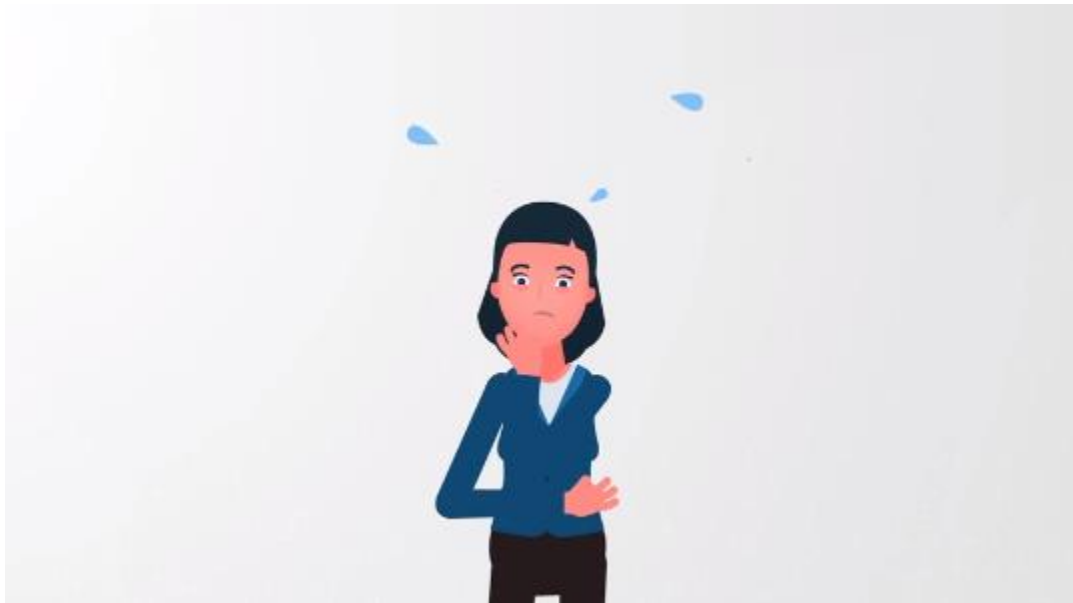




Practice Test Questions with Answers



1. Emma and Anna went to the market to buy 25 fruits. Emma bought a few apples which cost \$2 each, and Anna bought some oranges which cost \$3 each. If their combined total is \$60, how many oranges did Anna get?

- 1. 5
- 2. 10
- 3. 15
- 4. 20
- 5. 25

✓ Correct Answer

- 10

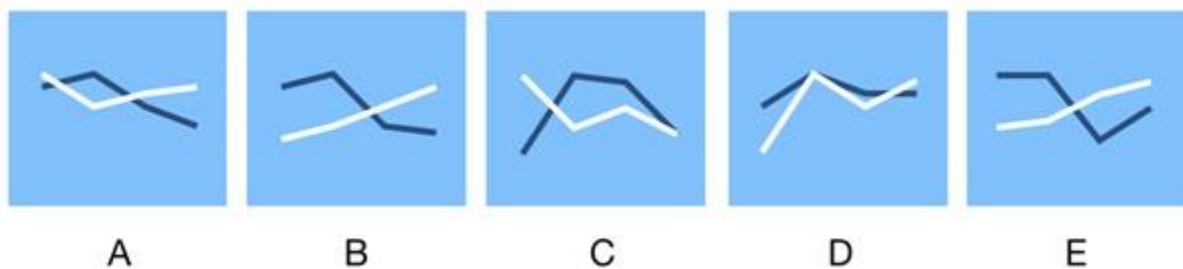
View the explanation and smart tactic for time traps recognition and 2 variable equation questions and practice questions at [Numerical reasoning module part 2 # 6](#) in the Rapid Wonderlic Mastery course.

2. Over a 4-month period, two students borrowed the following number of books:

Student 1: 20, 15, 17, 18

Student 2: 18, 20, 15, 12

Which graph best illustrates the data of both students?

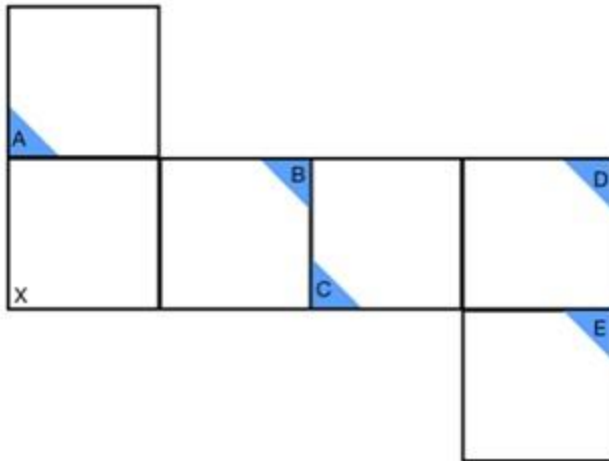


✓ Correct Answer

- A

View the 2 datasets 12 seconds sketch tactic, as explained with practice questions in [Data Sets and Graphical interpretation module # 4](#) in the Rapid Wonderlic Mastery course.

3. After folding these squares into a closed cube, which shaded corner would touch corner "X"?

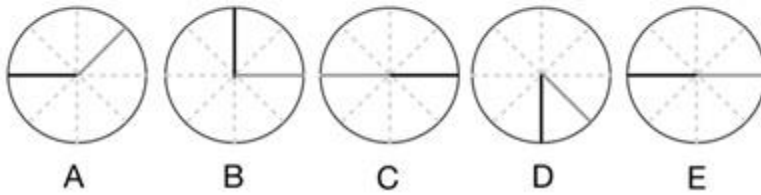
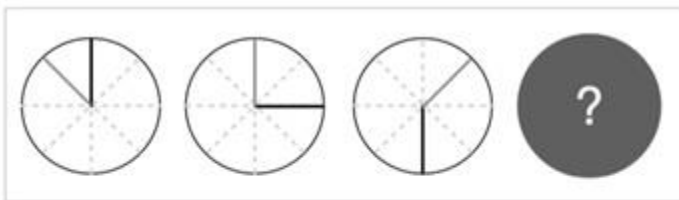


✓ Correct Answer

- E

View and learn with the animated video for 10-second-solution with visualization of all variations of the flatten-to-3D cubes types found on the Wonderlic test, with practice questions at [3D Cubes module # 13](#) in the Rapid Wonderlic Mastery course.

4. Replace the [?] in the boxed series.



✓ Correct Answer

- E

View the 10 seconds 2 steps tactic for Clock Hands Pattern questions at [Clock Hands Pattern questions module #16](#) in the Rapid Wonderlic Mastery course.

5. A total of \$114,000 will be evenly spent to build 12 Bungalows. If the first 5 bungalows have been completed and paid for, then ___?___ is still available for the remaining bungalows.

1. \$63,000
2. \$59,500
3. \$67,200
4. \$66,500
5. \$76,000

✓ Correct Answer

- \$66,500

View the quick ratio and decimal multiplication calculations explanation and practice questions at [Numerical reasoning module part 2 # 6](#) in the Rapid Wonderlic Mastery course.

6. Within the first 4 months of the year, Vicky was able to serve the following number of burgers: 370, 330, 460 and 420. The average number of burgers Vicky served per month was ___?___.

1. 410
2. 405
3. 395
4. 390
5. 385

✓ Correct Answer

- 395

View Wonderlic averages Pivot and Hidden Pivot, Unsymmetrical Number Series Averages, Number Series with Relations, Weekdays and Weekends Averages all explained without using a scrap paper, at [Averages module #3](#) in the Rapid Wonderlic Mastery course.

7. Four investors bought a real estate asset together and decided to divide the profits equally. Investor A invested \$200,000; investor B invested \$500,000; investor C invested \$800,000; investor D invested \$500,000. If the net profit for the first year was \$1,000,000, investor A receives ___?___ more than if the profits were divided in proportion to how much they invested.

1. 50,000

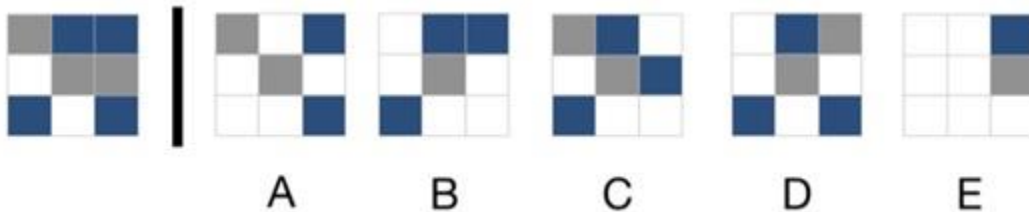
2. 100,000
3. 150,000
4. 200,000
5. 250,000

✓ Correct Answer

- 150,000

View the quick ratio and decimal multiplication calculations explanation and practice questions at [Numerical reasoning module part 2 # 6](#) in the Rapid Wonderlic Mastery course.

8. Which THREE choices are needed to create the figure on the left? Only pieces of the same color may overlap.



✓ Correct Answer

- A,B,E

View 3 choices and 2 choices tactic and learn how to avoid distractions, as explained with practice questions at [Checkered Figures module # 2](#) in the Rapid Wonderlic Mastery course.

9. The words LENIENT and FORBEARING have ___?___ meanings.

1. Similar
2. Contradictory
3. Unrelated

✓ Correct Answer

- Similar

View the quick tactic for Antonyms questions with practice questions at [Verbal module # 9](#) in the Rapid Wonderlic Mastery course.

10. The office floor is 250 ft. X 80 ft. The conference room floor is 50 ft. X 20 ft. , which covers ___?___ of the office.

1. 10%
2. 5%
3. 15%
4. 8%
5. 20%

✓ Correct Answer

- 5%

View area calculation shortcut formula explained with practice questions at [Percentages module # 7](#) in the Rapid Wonderlic Mastery course.